



Advanced Education Research & Development Programs RFI Webinar

May 22, 2018

We will be starting at 12:05 PDT/3:05 EDT

Sara Allan

Deputy Director, K-12 Education, Bill & Melinda Gates Foundation

Bror Saxberg

Vice President, Learning Science, Chan Zuckerberg Initiative

INTRODUCTIONS



SARA ALLAN

Deputy Director, K-12 Education
Bill & Melinda Gates Foundation



BROR SAXBERG

Vice President, Learning Science
Chan Zuckerberg Initiative

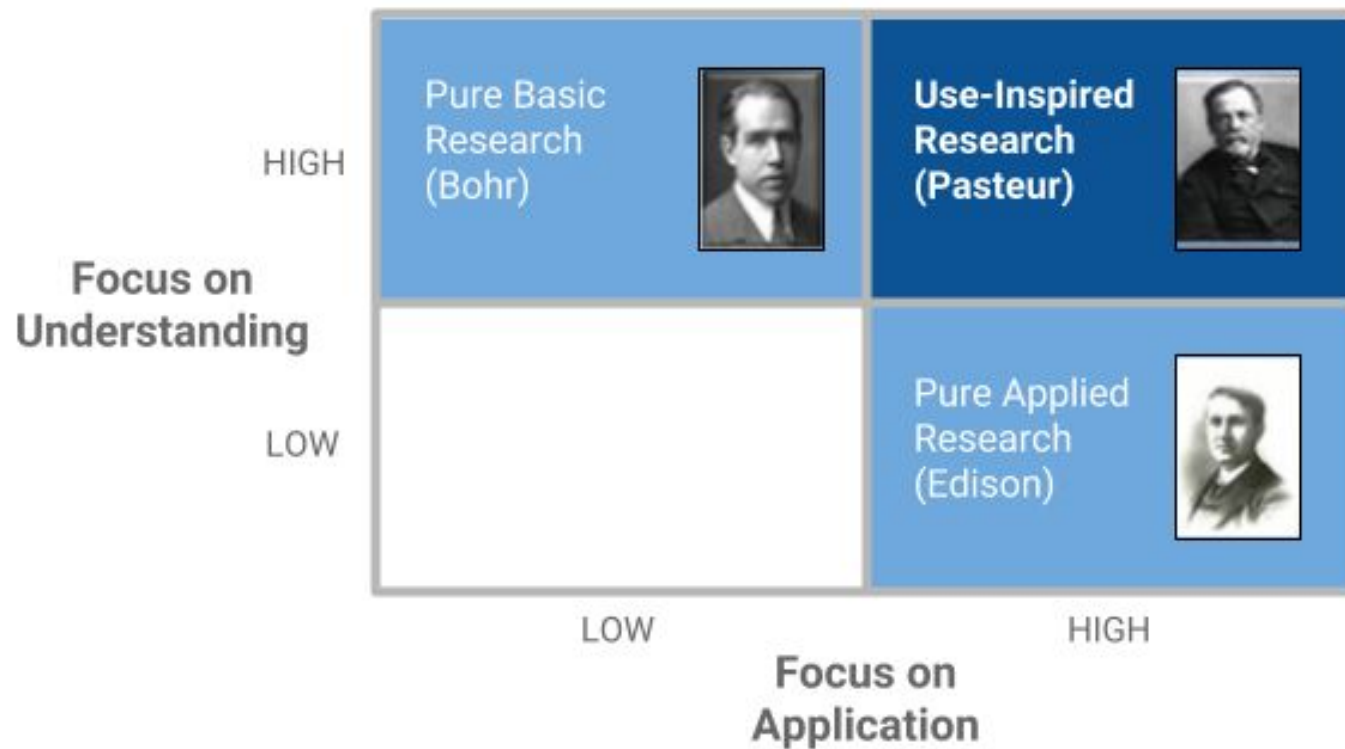
AGENDA

1. Background on our collaboration
2. A new approach to R&D
3. Why did we issue this RFI?
4. Benefits of participating in this RFI
5. RFI Program Areas: Math, Writing, Executive Function
6. What happens after this RFI closes?
7. Key definitions and tips for responding
8. Q&A

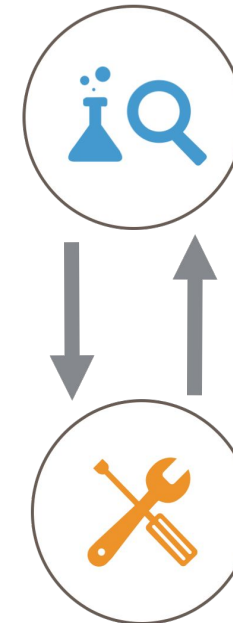
BACKGROUND ON OUR COLLABORATION

- The Chan Zuckerberg Initiative and the Bill & Melinda Gates Foundation share a common aim: for every child to have educational opportunities that enable them to develop the knowledge, skills, habits of mind, and agency to realize their full potential and live a healthy, productive, and fulfilling life.
- We are exploring innovative ways to facilitate and accelerate the integration and translation of evidence-informed teaching practices and research into scalable education practices, programs, and tools that support teachers and students.
- We believe it is possible to harness research and development for dramatic and life-changing improvements in learning and developmental outcomes, thus resetting expectations for students who are not being well served by our current approaches to education.

A NEW APPROACH TO R&D



Basic Research
Continuously Informs
Application



Product Development
Continuously Informs Basic
Research

WHY WE RELEASED THIS RFI



1. Learn & Share

We want to:

- Learn from you about what is working.
- Develop a landscape – both what is working and where are there gaps.
- Share our findings back with the field and other funders.



2. Inform Potential Future Funding Opportunities

We anticipate that this RFI will help identify potential funding areas we may pursue jointly or separately at our organizations.

BENEFITS FOR PARTICIPATING IN THIS RFI



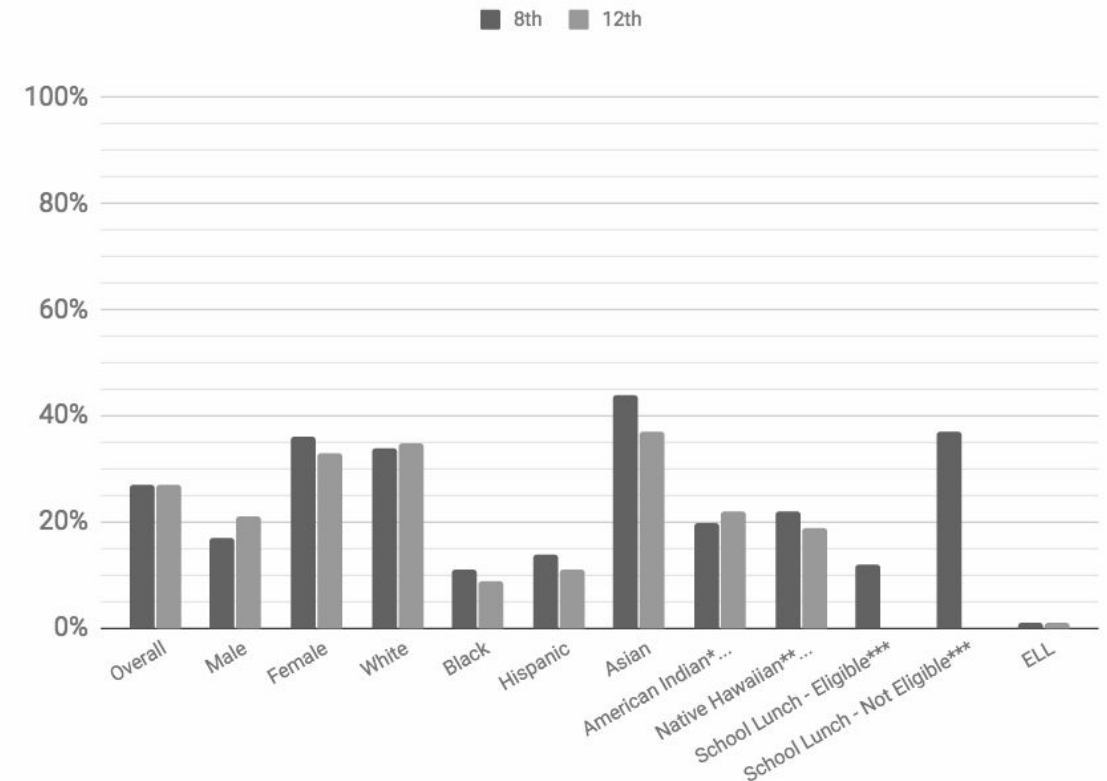
1. You are contributing to our understanding, and what we'll ultimately share back with the field about everything we are learning across the three program areas.
2. Your work will be shared not just with the Gates Foundation and the Chan Zuckerberg Initiative, but with other potential funders.
3. You will help us shape and refine the R&D strategy at our respective organizations as well as future collaborations between our entities.
4. We may reach out to you directly to collaborate in these three program areas.

RFI PROGRAM AREAS

Improving Writing: Developing the Requisite Habits, Skills, and Strategies

Writing is key to success in postsecondary education, and is in high demand by many of today's employers. The overwhelming majority of U.S. students fail to meet writing proficiency standards. New ways of strengthening writing is likely to improve student achievement and alleviate remediation costs employers incur each year.

NAEP 2011: Students Scoring Proficient or Above in Writing (select subgroups)

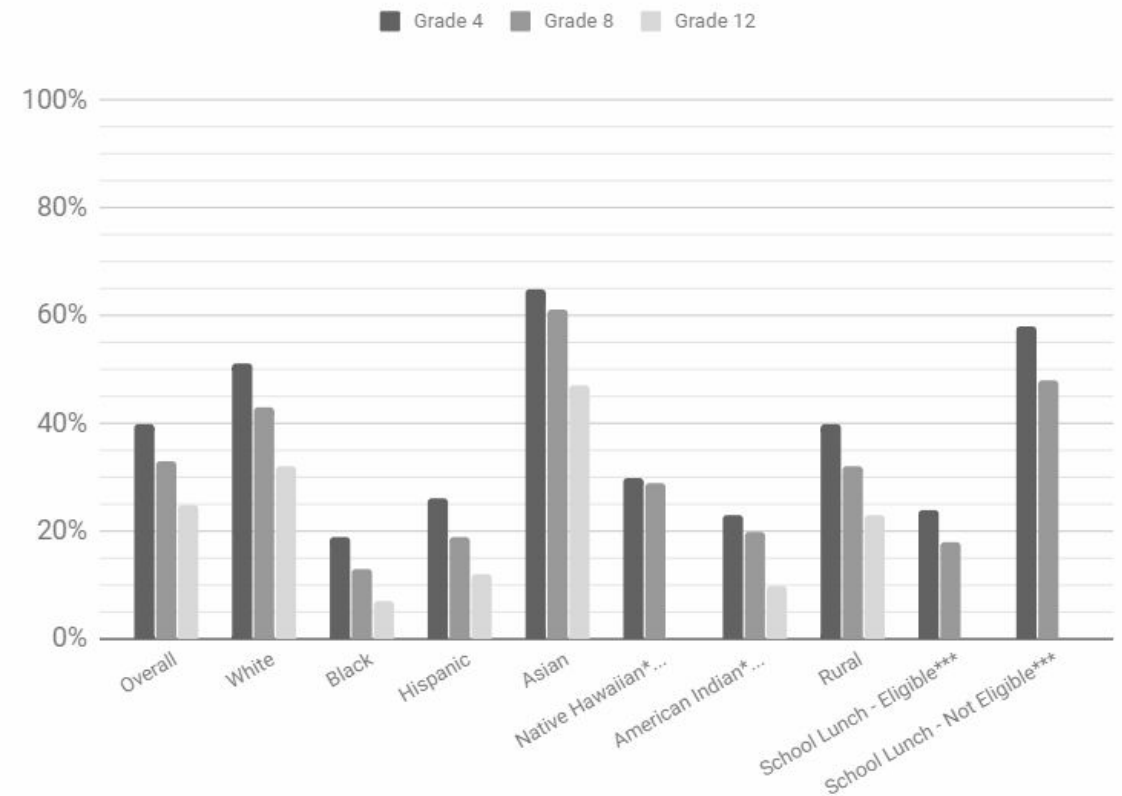


RFI PROGRAM AREAS

Improving Mathematical Understanding, Application, and Related Mindsets

Math skills are crucial to student success, but student proficiency declines sharply through the years of K-12 schooling, and low-income students and students of color are well behind their peers.

NAEP 2015: Students Scoring Proficient or Above in Math (select subgroups)



RFI PROGRAM AREAS

Measuring and Improving Executive Function

There is evidence that academic achievement and future career success are associated with **strong executive function** like memory, flexibility in thinking, and self-regulation.

New tools to master these critical skills, and a better understanding of how to strengthen them, is likely to improve socio-economic status and physical health.

WHAT HAPPENS AFTER THIS RFI CLOSES?



- Chan Zuckerberg Initiative and Bill & Melinda Gates Foundation teams will review the RFIs
- We will identify themes, what works, and gaps



- We bring RFI learnings to external experts and practitioners for feedback and insights
- Synthesis of learnings to the field produced
- We share learnings with other funders



- Inform research & development strategies at the Chan Zuckerberg Initiative and Bill & Melinda Gates Foundation
- Determine potential joint research & development programs

ADVANCED EDUCATION R&D PROGRAMS TRANSLATOR



1. Eligibility to Respond
2. Multiple Approaches or Responses
3. Word Count
4. Defining Breakthroughs
5. Evidence
6. Confidentiality

ADVANCED EDUCATION R&D PROGRAMS TRANSLATOR



ELIGIBILITY

Individuals, groups, or collaborations both inside and outside the education community, including but not limited to practitioners, universities, university affiliated research centers, non-profit research institutions, professional development organizations, government-sponsored labs, and public and private companies. International submissions are welcome.

MULTIPLE APPROACHES/ RFIs:

Yes!

WORD COUNT

Most questions are **300 words or less**. The longest question is limited to **800 words or less**. If you max out the word count for all questions, it is approximately 4 pages total.

ADVANCED EDUCATION R&D PROGRAMS TRANSLATOR



DEFINING BREAKTHROUGHS

The goal of this RFI is to identify possible solutions to tough problems in education that provide dramatic, rather than incremental, gains over current practice.

EVIDENCE

Ideas should either have evidence of promise or have strong theory to support the ideas. The goal for potential future programs would be to create evidence-based approaches, practices, and tools.

CONFIDENTIALITY

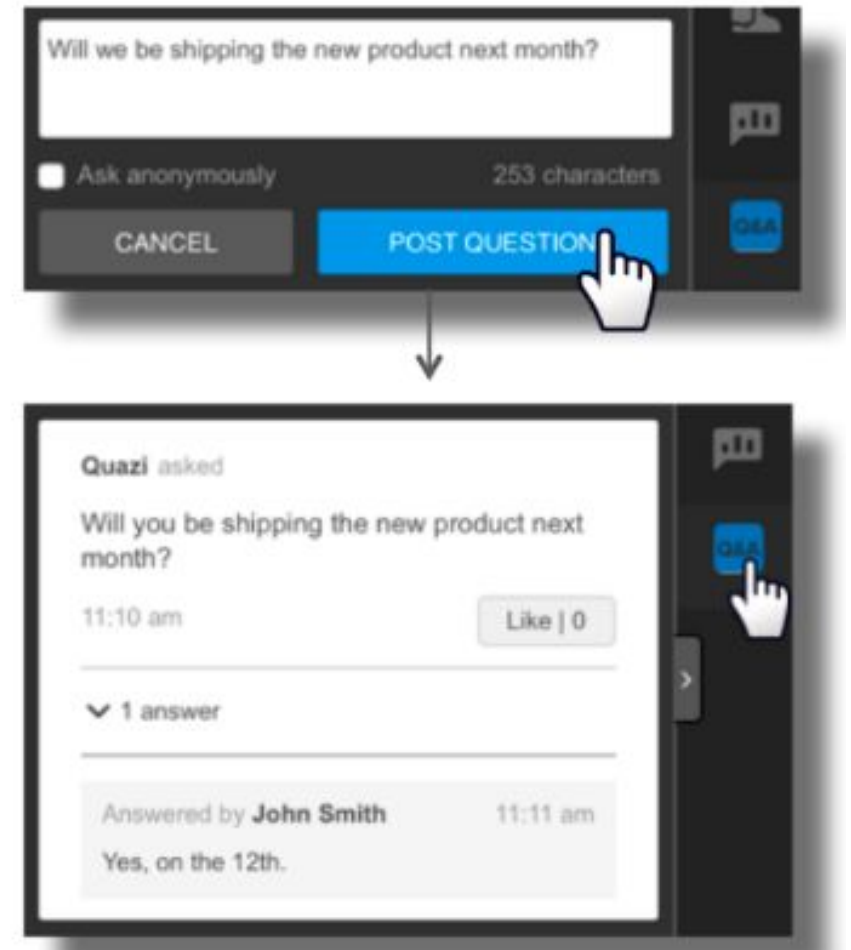
We ask that you do NOT submit confidential information, since it will not remain so through this RFI process. Ultimately, any projects or grants that may emerge later will incorporate ways to preserve intellectual property – any such ideas at this stage should be submitted in a form that does not yet require confidentiality or protection.

Q&A

What questions do you have about the RFI?

Attendees may submit questions by clicking the Q&A icon.

Attendees will see a blue alert bubble in the Q&A icon to note an answer has been received.



THANK YOU!

Email Us!



educationrdrfi@gatesfoundation.org

or

educationrdrfi@chanzuckerberg.com